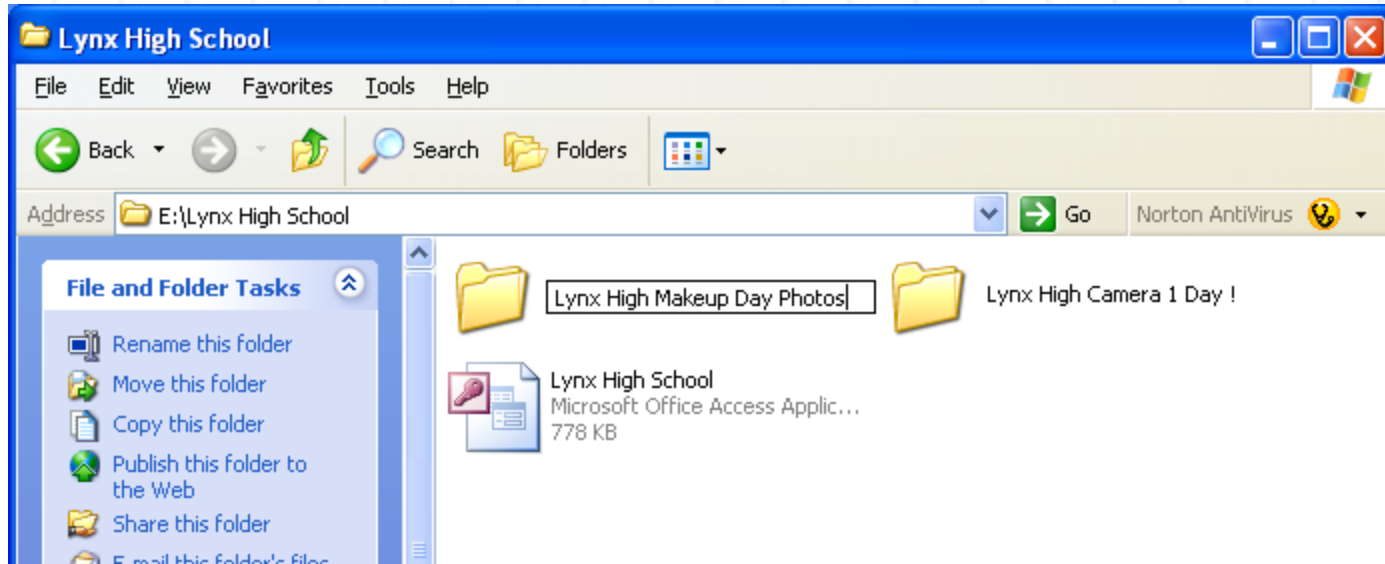


Sending the Job to Full Color for Yearbook CD



When the data and images are matched, cropped, corrected, and sized, the job is ready to submit to the lab for production of the yearbook and SIS disks.

To do this, copy the image files and the mdb database file to a DVD. Send this disk to the lab for production of the school disks.

Do not use the export functions or archive functions in ImageMatch for file submission.

SUGGESTION: Burn two disks of this data. Send one to the lab and store one in a safe place for at least two years.